

Acute kidney injury overview

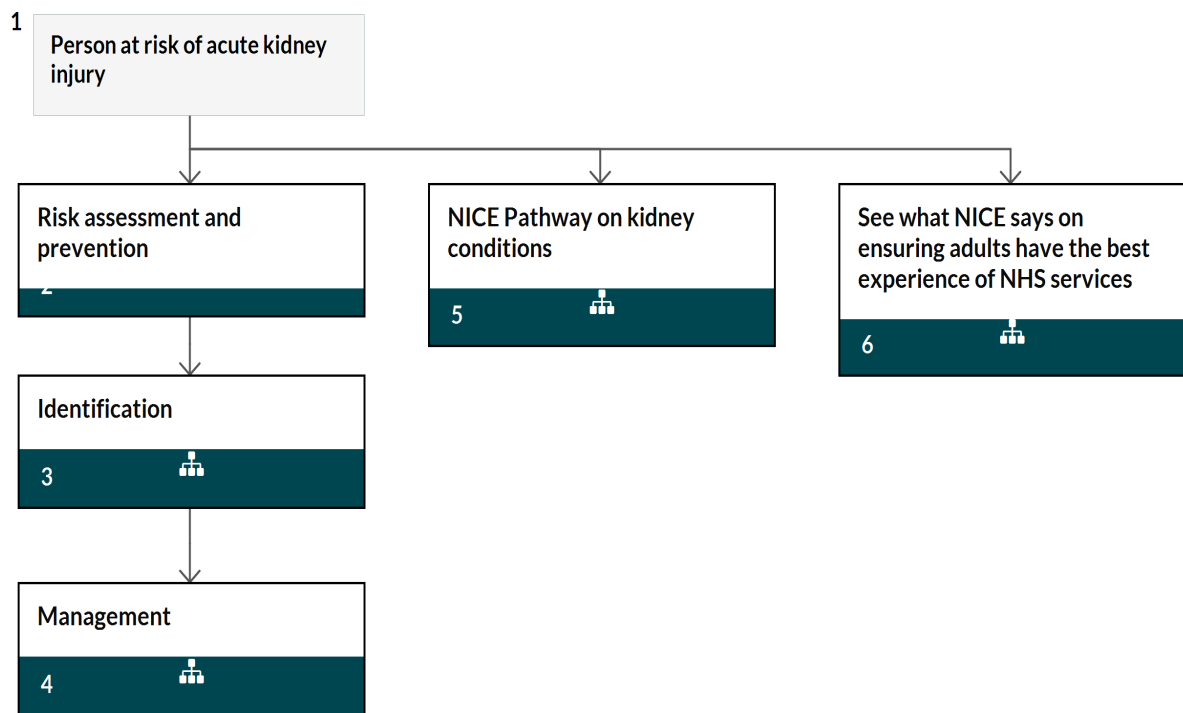
NICE Pathways bring together everything NICE says on a topic in an interactive flowchart. NICE Pathways are interactive and designed to be used online.

They are updated regularly as new NICE guidance is published. To view the latest version of this NICE Pathway see:

<http://pathways.nice.org.uk/pathways/acute-kidney-injury>

NICE Pathway last updated: 17 December 2019

This document contains a single flowchart and uses numbering to link the boxes to the associated recommendations.



1 Person at risk of acute kidney injury

No additional information

2 Risk assessment and prevention

[See Acute kidney injury / Risk assessment and prevention of acute kidney injury](#)

3 Identification

[See Acute kidney injury / Identifying acute kidney injury](#)

4 Management

[See Acute kidney injury / Managing acute kidney injury](#)

5 NICE Pathway on kidney conditions

[See Kidney conditions](#)

6 See what NICE says on ensuring adults have the best experience of NHS services

[See Patient experience in adult NHS services](#)

ACE

angiotensin-converting enzyme

Adult

(excluding pregnant woman)

Adults

(excluding pregnant women)

AKIN

acute kidney injury network

ARBs

angiotensin II receptor antagonists

CDSS

clinical decision support systems

Children

(excluding neonates less than 1 month old)

Child

(excluding neonate less than 1 month old)

eGFR

estimated glomerular filtration rate

First-pass renal exposure

(when the contrast medium reaches the renal arteries in a relatively undiluted form, for example, through injection into the left heart, thoracic and suprarenal abdominal aorta, or the renal arteries)

KDIGO

kidney disease: improving global outcomes

NSAIDs

non-steroidal anti-inflammatory drugs

(p)RIFLE

risk, injury, failure, loss, end stage renal disease; (p) refers to the paediatric classification

Your responsibility**Guidelines**

The recommendations in this guideline represent the view of NICE, arrived at after careful consideration of the evidence available. When exercising their judgement, professionals and practitioners are expected to take this guideline fully into account, alongside the individual needs, preferences and values of their patients or the people using their service. It is not mandatory to apply the recommendations, and the guideline does not override the responsibility to make decisions appropriate to the circumstances of the individual, in consultation with them and their families and carers or guardian.

Local commissioners and providers of healthcare have a responsibility to enable the guideline to be applied when individual professionals and people using services wish to use it. They should do so in the context of local and national priorities for funding and developing services, and in light of their duties to have due regard to the need to eliminate unlawful discrimination, to advance equality of opportunity and to reduce health inequalities. Nothing in this guideline should be interpreted in a way that would be inconsistent with complying with those duties.

Commissioners and providers have a responsibility to promote an environmentally sustainable health and care system and should assess and reduce the environmental impact of implementing NICE recommendations wherever possible.

Technology appraisals

The recommendations in this interactive flowchart represent the view of NICE, arrived at after careful consideration of the evidence available. When exercising their judgement, health professionals are expected to take these recommendations fully into account, alongside the individual needs, preferences and values of their patients. The application of the recommendations in this interactive flowchart is at the discretion of health professionals and their individual patients and do not override the responsibility of healthcare professionals to make decisions appropriate to the circumstances of the individual patient, in consultation with the patient and/or their carer or guardian.

Commissioners and/or providers have a responsibility to provide the funding required to enable the recommendations to be applied when individual health professionals and their patients wish to use it, in accordance with the NHS Constitution. They should do so in light of their duties to have due regard to the need to eliminate unlawful discrimination, to advance equality of opportunity and to reduce health inequalities.

Commissioners and providers have a responsibility to promote an environmentally sustainable health and care system and should assess and reduce the environmental impact of implementing NICE recommendations wherever possible.

Medical technologies guidance, diagnostics guidance and interventional procedures guidance

The recommendations in this interactive flowchart represent the view of NICE, arrived at after careful consideration of the evidence available. When exercising their judgement, healthcare professionals are expected to take these recommendations fully into account. However, the interactive flowchart does not override the individual responsibility of healthcare professionals to make decisions appropriate to the circumstances of the individual patient, in consultation with the patient and/or guardian or carer.

Commissioners and/or providers have a responsibility to implement the recommendations, in their local context, in light of their duties to have due regard to the need to eliminate unlawful discrimination, advance equality of opportunity, and foster good relations. Nothing in this interactive flowchart should be interpreted in a way that would be inconsistent with compliance with those duties.

Commissioners and providers have a responsibility to promote an environmentally sustainable health and care system and should assess and reduce the environmental impact of implementing NICE recommendations wherever possible.